



3855 North Ocoee Street, Suite 200
Cleveland, TN 37312

SENT BY FEDERAL EXPRESS

December 12, 2012

Mr. Patrick Bowe
Director
Remediation Division
Bureau of Water Protection and Land Reuse
State of Connecticut Department of Energy and Environmental Protection
79 Elm Street
Hartford, CT 06106

Re: Property-Specific Remedial Action Report
Newhall Street Neighborhood
176 Morse Street, Block P
Hamden, Connecticut 06517

Dear Mr. Bowe:

Enclosed please find the Property-Specific Remedial Action Report (RAR) prepared for the property located at 176 Morse Street in Hamden, Connecticut. The Property-Specific RAR summarizes the remediation and restoration activities conducted at the property as required by Consent Order No. SRD-128. Remediation and restoration of this property are complete and were implemented in compliance with the Remedy Selection Plan, the Generic RAP, and the Property-Specific Remedial Action Plan (RAP) approved by the Connecticut Department of Energy and Environmental Protection (DEEP).

Section 2.0 of the enclosed report documents property-specific construction activities, as well as any adjustments to the Property-Specific RAP that were required due to the extent of fill encountered or other field conditions. Please note that any field adjustments made were pursuant to the approved Generic RAP and/or with DEEP oversight and approval. Olin hereby submits this Property-Specific RAR for DEEP approval. As noted below and as required by the Remedy Selection Plan, a copy of the enclosed report has also been provided to the property owner.

Please contact me at (800) 295-6141 if you have any questions regarding this matter.

Sincerely,
OLIN CORPORATION

A handwritten signature in black ink, appearing to read "David M. Share".

David M. Share
Director, Environmental Remediation

cc: Ann Clomon – 176 Morse Street, Hamden, Connecticut 06517
Curt Richards – Olin
Carrie Hunt – Olin
Nelson Walter – AMEC
Robert Bell – DEEP
Ray Frigon – DEEP
Richard Pearce – Newhall Street Neighborhood Community Liaison
Robert Labulis – Town of Hamden Building Department

**PROPERTY-SPECIFIC REMEDIAL ACTION REPORT
176 MORSE STREET**

**NON-PUBLIC PROPERTIES
NEWHALL STREET NEIGHBORHOOD
HAMDEN, CONNECTICUT**

Prepared for:



Olin Corporation
3855 North Ocoee Street, Suite 200
Cleveland, TN 37312

Prepared by:



AMEC Environment & Infrastructure, Inc.
1090 Elm Street, Suite 201
Rocky Hill, Connecticut 06067

December 12, 2012

AMEC Project Number: 6107120004.155

**PROPERTY-SPECIFIC REMEDIAL ACTION REPORT
176 MORSE STREET**

**NON-PUBLIC PROPERTIES
NEWHALL STREET NEIGHBORHOOD
HAMDEN, CONNECTICUT**

Prepared For:



Olin Corporation
3855 North Ocoee Street, Suite 200
Cleveland, TN 37312

Prepared By:



AMEC Environment & Infrastructure, Inc.
1090 Elm Street, Suite 201
Rocky Hill, Connecticut 06067

December 12, 2012

AMEC Project Number: 6107120004.155

A handwritten signature in black ink that reads "Nelson Walter".

Nelson Walter, P.E.
Project Manager

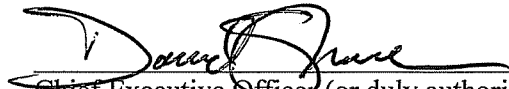
A handwritten signature in black ink that reads "J. Rod Pendleton".

Rod Pendleton, P.G
Principal Scientist

DOCUMENT CERTIFICATION

I have personally examined and am familiar with the information submitted in this document and all attachments thereto, and I certify, based on reasonable investigation, including my inquiry of those individuals responsible for obtaining the information, that the submitted information is true, accurate and complete to the best of my knowledge and belief. I understand that any false statement made in the submitted information is punishable as a criminal offense under §53a-157b of the Connecticut General Statutes and any other applicable law.

David M. Share, Director, Environmental Remediation



Chief Executive Officer (or duly authorized representative)
Olin Corporation

DOCUMENT CERTIFICATION

I have personally examined and am familiar with the information submitted in this document and all attachments thereto, and I certify, based on reasonable investigation, including my inquiry of those individuals responsible for obtaining the information, that the submitted information is true, accurate and complete to the best of my knowledge and belief. I understand that any false statement made in the submitted information is punishable as a criminal offense under §53a-157b of the Connecticut General Statutes and any other applicable law.

Nelson Walter, Project Manager



AMEC Environment & Infrastructure, Inc.

TABLE OF CONTENTS

1.0	INTRODUCTION	1-1
1.1	Regulatory Status.....	1-1
1.2	Description of Remedy Process	1-1
2.0	PROPERTY-SPECIFIC CONSTRUCTION ACTIVITIES.....	2-1
3.0	REFERENCES	3-1

FIGURES

Figure 2-1 Post-Construction Conditions

TABLES

Table 2-1 Excavation Confirmation XRF Sampling Results

ATTACHMENTS

A Photographs

ACRONYMS AND ABBREVIATION

AMEC	AMEC Environment & Infrastructure, Inc.
bgs	below ground surface
DEEP	Connecticut Department of Energy and Environmental Protection
mg/kg	milligrams per kilogram
NPP	Non-Public Properties
Olin	Olin Corporation
RAP	Remedial Action Plan
RAR	Remedial Action Report
RSP	Remedy Selection Plan
XRF	X-ray fluorescence

1.0 INTRODUCTION

This Property-Specific Remedial Action Report (RAR) was prepared by AMEC Environment & Infrastructure, Inc. (AMEC) on behalf of Olin Corporation (Olin) for the property located at 176 Morse Street in Hamden, Connecticut. This Property-Specific RAR was prepared based on information obtained during remediation activities conducted at the property during the 2012 construction season. This document provides information about the remediation activities completed for the property, which are required by Consent Order SRD-128 entered into by Olin, the Town of Hamden, the Regional Water Authority, the State Board of Education, and the State of Connecticut Department of Energy and Environmental Protection (DEEP). The Consent Order requires Olin to excavate and remove fill material up to 4 feet below ground surface (bgs) from approximately 230 residential properties within the Consent Order boundary.

Section 1 of this report provides a summary of site history and a general description of the remedy process for the Newhall Street Neighborhood. Section 2 of this report describes the construction activities conducted at 176 Morse Street.

1.1 Regulatory Status

In April 2003, the DEEP issued a Consent Order to Olin, the Town of Hamden, South Central Connecticut Regional Water Authority, and the State Board of Education (DEEP, 2003). The Consent Order requires Olin to investigate and remediate the Non-Public Properties (NPP) within the Consent Order boundary of the Newhall Street Neighborhood.

1.2 Description of Remedy Process

In October 2007, a Final Remedy Selection Plan (RSP) was approved and issued by the Commissioner of the DEEP (DEEP, 2007). The remedy for the NPP within the Consent Order boundary is summarized below:

- Excavation of fill within the top 4 feet;
- Disposition of excavated material at authorized off-site facilities;
- Backfilling of excavated areas with clean soil; and
- Restoration of existing features including landscaping, patios, fencing, driveways, etc. that are disturbed during construction activities.

The Final Design - Generic Remedial Action Plan (RAP) (AMEC, 2008), was approved by the DEEP and serves as the basis for remedial action activities within the NPP. The Final Design - Generic RAP details remedial construction activities including excavation of fill to a depth of up to four feet, backfilling excavations, disposition of fill and debris, and restoration of disturbed areas. Detailed plans and specifications regarding the remediation are contained in the Generic RAP and other project plans which have been approved by the DEEP. The Final Design - Generic

RAP and other plans are available at the Town of Hamden Miller Public Library located at 290 Dixwell Avenue, and on the DEEP website at: <http://www.newhallinfo.org>.

Prior to implementing the approved remedial solution, a Property-Specific RAP was prepared for each property owner and submitted to the DEEP for approval. The purpose of the Property-Specific RAP was to provide the homeowner with information regarding the planned construction activities, temporary relocation requirements (if necessary), access provisions, an estimated time table to complete the planned work, and a description of plans to restore the property to existing conditions.

2.0 PROPERTY-SPECIFIC CONSTRUCTION ACTIVITIES

During the 2012 construction season, Olin completed the excavation, backfill, and restoration of the property in accordance with the Final Design - Generic RAP and the Property-Specific RAP. Figure 2-1 shows the areas where excavation occurred on the property and the locations of excavation confirmation samples. Excavation confirmation samples were collected in accordance with Section 3.2.3 - Confirmatory Sampling of the Final Design - Generic RAP, including adherence to the sampling frequency requirements. X-ray fluorescence (XRF) excavation confirmation sampling results are presented in Table 2-1. As indicated in Table 2-1, all confirmation sampling results indicated total lead concentrations less than the criteria of 400 mg/kg approved by DEEP in the Final Design - Generic RAP.

The following is a description of changes from the Property-Specific RAP that were necessitated because of field conditions and/or details regarding the marker barrier installed following excavation activities:

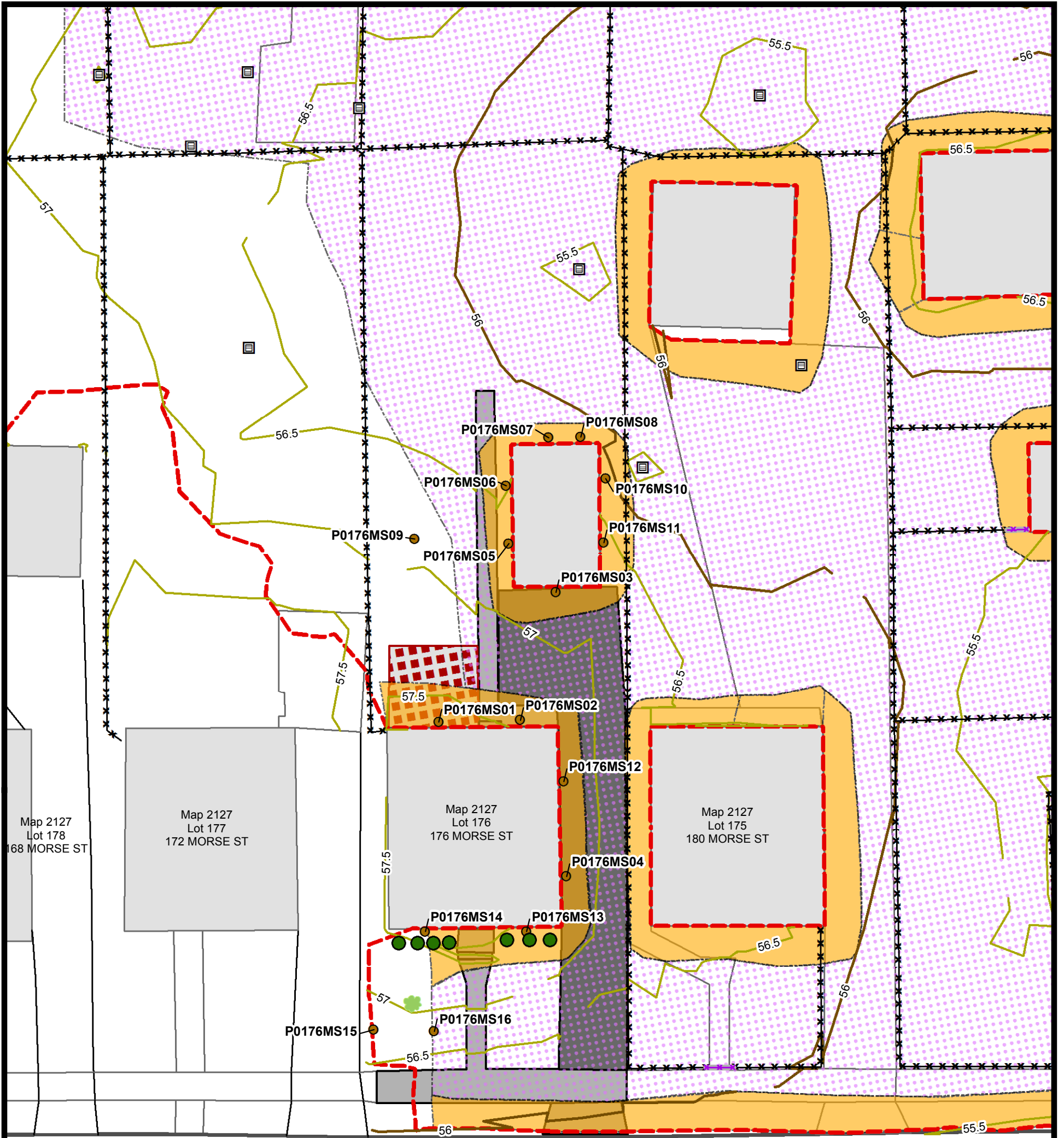
- In some locations, fill material was present at depths greater than 4 feet below ground surface (bgs). This fill material was left in place, covered by an orange geotextile fabric, and backfilled with clean soil in accordance with the Final Design - Generic RAP. Figure 2-1 shows the approximate area of geotextile fabric identifying the presence of fill at a depth greater than 4 feet bgs.
- In some locations, it was necessary to leave fill material in place at depths less than 4 feet bgs in order to avoid jeopardizing the integrity of a structure. This fill material was left in place, covered by an orange geotextile fabric and/or concrete, and backfilled with clean soil in accordance with the Final Design - Generic RAP. Figure 2-1 shows the approximate area of geotextile fabric/concrete identifying the presence of fill at a depth less than 4 feet bgs.
- As part of efforts to improve drainage following excavation and backfill activities, a drywell was installed in a low-lying portion of the yard. The location of this feature is shown on Figure 2-1.

Photographs of construction activities and the restored property are presented in Attachment A.

3.0 REFERENCES

- DEEP, 2003. Order No. SRD-128, State Of Connecticut vs. Town Of Hamden, South Central Connecticut Regional Water Authority, State Board Of Education, and Olin Corporation. State of Connecticut Department of Energy and Environmental Protection, April 16, 2003.
- DEEP, 2007. Remedy Selection Plan, Newhall Street, Neighborhood Remediation Project. State of Connecticut Department of Energy and Environmental Protection, October 2007
- AMEC, 2008. Final Design - Generic Remedial Action Plan, Non-Public Properties, Newhall Street Neighborhood, Hamden, Connecticut. AMEC Environment & Infrastructure, Inc., August 19, 2008.

FIGURES

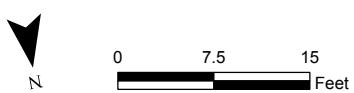


Morse Street

Legend

- | | | | |
|-----------------------------------------------------------------------------------------------|-------------------------------------------|------------------------------|-------------|
| Approximate Extent of Orange Marker Barrier
Covering Fill > 4 ft bgs Remaining on Property | Excavation Confirmation Sample | New Tree | New Drywell |
| Approximate Extent of Marker Barrier
Covering Fill < 4 ft bgs Remaining on Property | Limits of Excavation | New Shrub | |
| | Final Elevation Contour (2-ft interval) | New Fence | |
| | Final Elevation Contour (0.5-ft interval) | New Fence Gate | |
| | | New Asphalt Driveway | |
| | | New Concrete Sidewalk/Stairs | |
| | | New Brick Patio | |

Note: All grass areas disturbed by excavation were restored with sod and/or seed/mulch.



Prepared/Date: BRP 10/26/12
Checked/Date: DRP 10/26/12

TABLES

**TABLE 2-1
EXCAVATION CONFIRMATION XRF SAMPLING RESULTS**

**176 MORSE STREET
NEWHALL STREET NEIGHBORHOOD
HAMDEN, CONNECTICUT**

Location ID	Location Type	Field Sample ID	Sample Date	Top Depth (ft,bgs)	Bottom Depth (ft,bgs)	Parameter	Result	Final Qualifier	Unit of Measure
P0176MS01EX	PES	P0176MS-SON0102EX	29-May-12	2	2	Lead	50	U	MG/KG
P0176MS02EX	PES	P0176MS-SON0202EX	29-May-12	2	2	Lead	390		MG/KG
P0176MS03EX	PES	P0176MS-SON0302EX	29-May-12	2	2	Lead	312		MG/KG
P0176MS04EX	PES	P0176MS-SON0403EX	05-Jun-12	3	3	Lead	269		MG/KG
P0176MS05EX	PES	P0176MS-SON0502EX	29-May-12	2	2	Lead	50	U	MG/KG
P0176MS06EX	PES	P0176MS-SON0602EX	29-May-12	2	2	Lead	50	U	MG/KG
P0176MS07EX	PES	P0176MS-SON0703EX	29-May-12	3	3	Lead	53		MG/KG
P0176MS08EX	PES	P0176MS-SON0803EX	29-May-12	3	3	Lead	50	U	MG/KG
P0176MS09EX	PEB	P0176MS-SON0903EX	30-May-12	3	3	Lead	55		MG/KG
P0176MS10EX	PES	P0176MS-SON1003EX	01-Jun-12	3	3	Lead	150		MG/KG
P0176MS11EX	PES	P0176MS-SON1103EX	01-Jun-12	3	3	Lead	200		MG/KG
P0176MS12EX	PES	P0176MS-SON1203EX	05-Jun-12	3	3	Lead	50	U	MG/KG
P0176MS13EX	PES	P0176MS-SON1303EX	06-Jun-12	3	3	Lead	96		MG/KG
P0176MS14EX	PES	P0176MS-SON1402EX	06-Jun-12	2	2	Lead	50	U	MG/KG
P0176MS15EX	PES	P0176MS-SON1502EX	06-Jun-12	2	2	Lead	50	U	MG/KG
P0176MS16EX	PEB	P0176MS-SON1603EX	06-Jun-12	3	3	Lead	50	U	MG/KG

Notes: bgs - below ground surface
ft - feet
KG - kilograms
MG - milligrams
PEB - sample from bottom of excavation
PES - sample from perimeter of excavation
U - not detected at a concentration above the reporting limit
XRF - x-ray fluorescence

**ATTACHMENT A
PHOTOGRAPHS**



View looking southeast at excavated front yard and driveway area.



View looking east at front yard following placement of marker barrier.



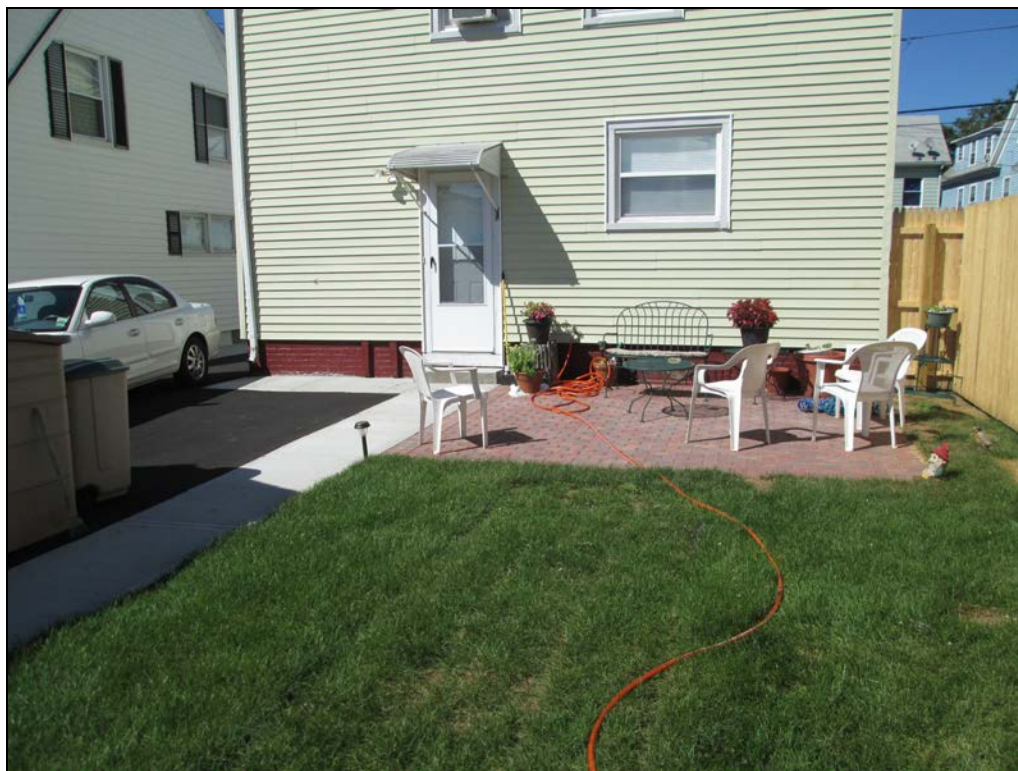
View looking north at excavated back yard.



View looking south at restored front yard.



View looking south at partially restored back yard.



View looking north at restored back patio.