



3855 North Ocoee Street, Suite 200
Cleveland, TN 37312

SENT VIA CERTIFIED MAIL

March 22, 2011

Mr. Patrick Bowe
Remediation Division
Bureau of Water Protection and Land Reuse
State of Connecticut Department of Environmental Protection
79 Elm Street
Hartford, CT 06106

Re: Property-Specific Remedial Action Report
Newhall Street Neighborhood
35 North Sheffield Street
Hamden, Connecticut 06517

Dear Mr. Bowe:

Enclosed is the Property-Specific Remedial Action Report (RAR) prepared for the property located at 35 North Sheffield Street in Hamden, Connecticut. The Property-Specific RAR summarizes the remediation and restoration activities conducted at the property as required by Consent Order No. SRD-128. Remediation and restoration for this property is complete and has been implemented in compliance with the Remedy Selection Plan and the Generic RAP approved by the Connecticut Department of Environmental Protection (CTDEP).

Section 2.0 of the RAR documents property-specific construction activities, as well as any adjustments to the Property-Specific Remedial Action Plan (RAP) that were required due to the extent of fill encountered or other field conditions. Please note that any field adjustments made were pursuant to the approved Generic RAP and/or with CTDEP oversight and approval. Olin hereby submits this Property-Specific RAR for CTDEP approval.

Please contact me at (423) 336-4540 if you have any questions regarding this matter.

Sincerely,
OLIN CORPORATION

A handwritten signature in black ink, appearing to read "David M. Share".

David M. Share
Director, Environmental Remediation

cc: Mr. Robert Clarke – PO Box 303, Lanham, Maryland 20703-0303
Curt Richards – Olin
Carrie Hunt – Olin
Nelson Walter – MACTEC
Robert Bell – CTDEP
Ray Frigon – CTDEP
Richard Pearce – Newhall Street Neighborhood Community Liaison

**PROPERTY-SPECIFIC REMEDIAL ACTION REPORT
35 NORTH SHEFFIELD STREET**

**NON-PUBLIC PROPERTIES
NEWHALL STREET NEIGHBORHOOD
HAMDEN, CONNECTICUT**

Prepared for:

Olin Corporation
Cleveland, Tennessee

Prepared by:



MACTEC Engineering and Consulting, Inc.
1090 Elm Street, Suite 201
Rocky Hill, Connecticut 06067

March 22, 2011

**PROPERTY-SPECIFIC REMEDIAL ACTION REPORT
35 NORTH SHEFFIELD STREET**

**NON-PUBLIC PROPERTIES
NEWHALL STREET NEIGHBORHOOD
HAMDEN, CONNECTICUT**

Prepared for:

Olin Corporation
Cleveland, Tennessee

Prepared by:



MACTEC Engineering and Consulting, Inc.
1090 Elm Street, Suite 201
Rocky Hill, Connecticut 06067

March 22, 2011

MACTEC Project No.: 6107110004-55

A handwritten electronic signature in black ink, appearing to read "Nelson Walter", positioned to the right of the MACTEC logo.

MACTEC Electronic Signature

Nelson Walter, P.E.
Project Manager

A handwritten electronic signature in black ink, appearing to read "Rod Pendleton", positioned to the right of the MACTEC logo.

MACTEC Electronic Signature

Rod Pendleton, P.G.
Principal Scientist

DOCUMENT CERTIFICATION

I have personally examined and am familiar with the information submitted in this document and all attachments thereto, and I certify, based on reasonable investigation, including my inquiry of those individuals responsible for obtaining the information, that the submitted information is true, accurate and complete to the best of my knowledge and belief. I understand that any false statement made in the submitted information is punishable as a criminal offense under §53a-157b of the Connecticut General Statutes and any other applicable law.

David M. Share, Director, Environmental Remediation



Chief Executive Officer (or duly authorized representative)
Olin Corporation

DOCUMENT CERTIFICATION

I have personally examined and am familiar with the information submitted in this document and all attachments thereto, and I certify, based on reasonable investigation, including my inquiry of those individuals responsible for obtaining the information, that the submitted information is true, accurate and complete to the best of my knowledge and belief. I understand that any false statement made in the submitted information is punishable as a criminal offense under §53a-157b of the Connecticut General Statutes and any other applicable law.

Nelson Walter, Project Manager



MACTEC Engineering and Consulting, Inc.

TABLE OF CONTENTS

1.0	INTRODUCTION	1-1
1.1	REGULATORY STATUS	1-1
1.2	DESCRIPTION OF REMEDY PROCESS	1-1
2.0	PROPERTY-SPECIFIC CONSTRUCTION ACTIVITIES	2-1
3.0	REFERENCES	3-1

FIGURES

Figure 2-1 Post-Construction Conditions

TABLES

Table 2-1 Excavation Confirmation XRF Sampling Results

ATTACHMENTS

Attachment A Photographs

LIST OF ACRONYMS AND ABBREVIATIONS

bgs	below ground surface
CTDEP	Connecticut Department of Environmental Protection
MACTEC	MACTEC Engineering and Consulting, Inc.
NPP	non-public properties
Olin	Olin Corporation
RAP	Remedial Action Plan
RAR	Remedial Action Report
RSP	Remedy Selection Plan
XRF	X-ray fluorescence

1.0 INTRODUCTION

This Property-Specific Remedial Action Report (RAR) was prepared by MACTEC Engineering and Consulting, Inc. (MACTEC) on behalf of Olin Corporation (Olin) for the property located at 35 North Sheffield Street in Hamden, Connecticut. This Property-Specific RAR was prepared based on information obtained during remediation activities conducted at the property during the 2010 construction season. This document provides information about the remediation activities completed for the property, which are required by Consent Order SRD-128 entered into by Olin, the Town of Hamden, the Regional Water Authority, the State Board of Education, and the State of Connecticut Department of Environmental Protection (CTDEP). The Consent Order requires Olin to excavate and remove fill material up to 4 feet below ground surface (bgs) from approximately 230 residential properties within the Consent Order boundary.

Section 1 of this report provides a summary of site history and a general description of the remedy process for the Newhall Street Neighborhood. Section 2 of this report describes the construction activities conducted at 35 North Sheffield Street.

1.1 REGULATORY STATUS

In April 2003, the CTDEP issued a Consent Order to Olin, the Town of Hamden, South Central Connecticut Regional Water Authority, and the State Board of Education (CTDEP, 2003). The Consent Order requires Olin to investigate and remediate the Non-Public Properties (NPP) within the Consent Order boundary of the Newhall Street Neighborhood.

1.2 DESCRIPTION OF REMEDY PROCESS

In October 2007, a Final Remedy Selection Plan (RSP) was approved and issued by the Commissioner of the CTDEP (CTDEP, 2007). The remedy for the NPP within the Consent Order boundary is summarized below:

- Excavation of fill within the top 4 feet;
- Disposition of excavated material at authorized off-site facilities;
- Backfilling of excavated areas with clean soil; and
- Restoration of existing features including landscaping, patios, fencing, driveways, etc. that are disturbed during construction activities.

The Final Design - Generic Remedial Action Plan (RAP) (MACTEC, 2008), was approved by the CTDEP and serves as the basis for remedial action activities within the NPP. The Final Design - Generic RAP details remedial construction activities including excavation of fill to a depth of up to four feet, backfilling excavations, disposition of fill and debris, and restoration of disturbed areas. Detailed plans and specifications regarding the remediation are contained in the Generic RAP and other project plans which have been approved by the CTDEP. The Final Design - Generic RAP and other plans are available at the Town of Hamden Miller Public Library located at 290 Dixwell Avenue, and on the CTDEP website at: <http://www.newhallinfo.org>.

The Final Design-General RAP requires that prior to implementing the approved remedial solution, a Property-Specific RAP be prepared for each property owner and submitted to the CTDEP for approval. The purpose of the Property-Specific RAP is to provide the homeowner with information regarding the planned construction activities, temporary relocation requirements (if necessary), access provisions, an estimated time table to complete the planned work, and a description of plans to restore the property to existing conditions.

2.0 PROPERTY-SPECIFIC CONSTRUCTION ACTIVITIES

During the 2010 construction season, Olin completed the excavation of fill material to a depth of 4 feet bgs, backfill, and restoration of the property in accordance with the Final Design - Generic RAP and the Property-Specific RAP. Figure 2-1 shows the areas where excavation occurred on the property and the locations of excavation confirmation samples. Excavation confirmation samples were collected in accordance with Section 3.2.3 – Confirmatory Sampling of the Final Design - Generic RAP, including adherence to the sampling frequency requirements. X-ray fluorescence (XRF) excavation confirmation sampling results are presented in Table 2-1. As indicated in Table 2-1, all confirmation sampling results indicate total lead concentrations less than the criteria of 400 mg/kg approved by CTDEP in the Final Design - Generic RAP.

The following is a description of changes from the Property-Specific RAP that were necessitated because of field conditions:

- Additional fill material was located on the property outside of the originally expected areas presented in the Property-Specific RAP and the Final Design - Generic RAP.
- In some locations, fill material was encountered at a depth greater than 4 feet bgs. This fill material was left in place, covered by an orange geotextile fabric, and backfilled with clean soil in accordance with the Final Design - Generic RAP. Figure 2-1 shows the approximate area of geotextile fabric identifying the presence of fill at a depth greater than 4 feet bgs. This area extends from the center of the yard toward the eastern and southern property boundaries.

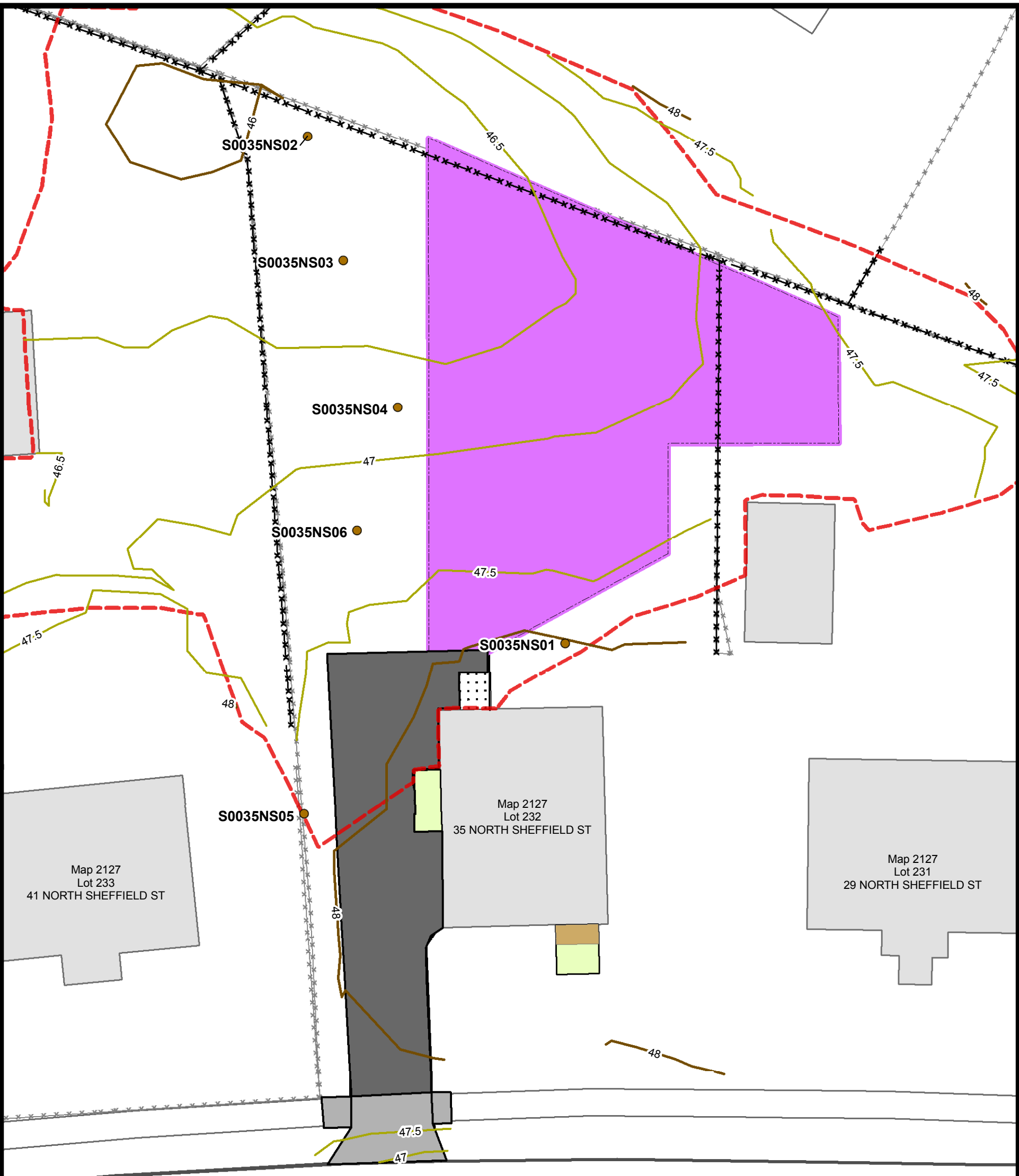
Photographs of construction activities and the restored property are presented in Attachment A.

3.0 REFERENCES

- CTDEP, 2003. Order No. SRD-128, State Of Connecticut vs. Town Of Hamden, South Central Connecticut Regional Water Authority, State Board Of Education, and Olin Corporation. State of Connecticut Department of Environmental Protection, April 16, 2003.
- CTDEP, 2007. Remedy Selection Plan, Newhall Street, Neighborhood Remediation Project. State of Connecticut Department of Environmental Protection, October 2007
- MACTEC, 2008. Final Design - Generic Remedial Action Plan, Non-Public Properties, Newhall Street Neighborhood, Hamden, Connecticut. MACTEC Engineering and Consulting, Inc., August 19, 2008.
- MACTEC, 2009. Property-Specific Remedial Action Plan, 35 North Sheffield Street, Non-Public Properties, Newhall Street Neighborhood, Hamden, Connecticut. MACTEC Engineering and Consulting, Inc., June 30, 2009.

FIGURES

Document: Z:\North Sheffield St\35\Remedial Action Report\Figure 2-1_35 North Sheffield_RAR.mxd PDF: Z:\North Sheffield St\35\Remedial Action Report\Figure 2-1_35 North Sheffield_RAR.pdf 02/07/2011 2:56 PM chyman

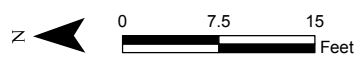


North Sheffield Street

Legend

- Approximate Extent of Orange Marker Barrier
- Limits of Excavation
- Final Elevation Contour (2-ft interval)
- Final Elevation Contour (0.5-ft interval)
- Porch
- Stairs
- Basement Hatch
- New Fence
- New Asphalt Driveway/Sidewalk
- New Concrete Driveway/Sidewalk
- Excavation Confirmation Sample

Note: All grass areas disturbed by excavation were restored with sod and/or seed/mulch.



Prepared/Date: CHL 02/07/11
Checked/Date: DRP 02/07/11

TABLES

**TABLE 2-1
EXCAVATION CONFIRMATION XRF SAMPLING RESULTS**

**35 NORTH SHEFFIELD STREET - NEWHALL STREET NEIGHBORHOOD
HAMDEN, CONNECTICUT**

Location ID	Location Type	Field Sample ID	Sample Date	Top Depth (ft,bgs)	Bottom Depth (ft,bgs)	Parameter	Result	Final Qualifier	Unit of Measure
S0035NS01	PES	S0035NS-SON0103EX	14-Sep-10	3	3	Lead	146		MG/KG
S0035NS02	PEB	S0035NS-SON0203EX	15-Sep-10	3	3	Lead	50	U	MG/KG
S0035NS03	PEB	S0035NS-SON0303EX	16-Sep-10	3	3	Lead	50	U	MG/KG
S0035NS04	PEB	S0035NS-SON0403EX	16-Sep-10	3	3	Lead	50	U	MG/KG

Notes: bgs - below ground surface
ft - feet
KG - kilograms
MG - milligrams
PEB - sample from bottom of excavation
PES - sample from perimeter of excavation
U - not detected at a concentration above the reporting limit
XRF - x-ray fluorescence

ATTACHMENT A

PHOTOGRAPHS



Looking west from adjacent property, view of excavation in back yard.



Looking west from adjacent property, view of excavation following placement of marker barrier.



Looking northeast from south side of house, view of restored property and newly-installed sod.



Looking west from back yard, view of restored driveway area.