



3855 North Ocoee Street, Suite 200
Cleveland, TN 37312

SENT BY FEDERAL EXPRESS

October 7, 2011

Mr. Patrick Bowe
Director
Remediation Division
Bureau of Water Protection and Land Reuse
Connecticut Department of Energy and Environmental Protection
79 Elm Street
Hartford, CT 06106

Re: Property-Specific Remedial Action Report
Newhall Street Neighborhood
53 Saint Mary Street, Block H
Hamden, Connecticut 06517

Dear Mr. Bowe:

Enclosed please find the Property-Specific Remedial Action Report (RAR) prepared for the property located at 53 Saint Mary Street in Hamden, Connecticut. The Property-Specific RAR summarizes the remediation and restoration activities conducted at the property as required by Consent Order No. SRD-128. Remediation and restoration of this property are complete and were implemented in compliance with the Remedy Selection Plan, the Generic RAP, and the Property-Specific Remedial Action Plan (RAP) approved by the Connecticut Department of Energy and Environmental Protection (DEEP).

Section 2.0 of the enclosed report documents property-specific construction activities, as well as any adjustments to the Property-Specific RAP that were required due to the extent of fill encountered or other field conditions. Please note that any field adjustments made were pursuant to the approved Generic RAP and/or with DEEP oversight and approval. Olin hereby submits this Property-Specific RAR for DEEP approval. As noted below and as required by the Remedy Selection Plan, a copy of the enclosed report has also been provided to the property owner.

Please contact me at (423) 336-4540 if you have any questions regarding this matter.

Sincerely,
OLIN CORPORATION

David M. Share
Director, Environmental Remediation

Enclosure

cc: Ms. Marianne Naccarato – 117 Hoyt Street, Guilford, CT 06437 (w/enclosure)
Robert Bell – DEEP (w/enclosure)
Ray Frigon – DEEP (w/enclosure)
Curt Richards – Olin (w/o enclosure)
Carrie Hunt – Olin (w/o enclosure)
Nelson Walter – AMEC (w/o enclosure)
Richard Pearce – Newhall Street Neighborhood Community Liaison (w/enclosure)
Robert Labulis – Town of Hamden Building Department (w/enclosure)

**PROPERTY-SPECIFIC REMEDIAL ACTION REPORT
53 SAINT MARY STREET**

**NON-PUBLIC PROPERTIES
NEWHALL STREET NEIGHBORHOOD
HAMDEN, CONNECTICUT**

Prepared for:



Olin Corporation
3855 North Ocoee Street, Suite 200
Cleveland, TN 37312

Prepared by:



AMEC Environment & Infrastructure, Inc.
511 Congress Street, Suite 200
Portland, Maine 04101

October 7, 2011

AMEC Project Number: 6107110004/75

**PROPERTY-SPECIFIC REMEDIAL ACTION REPORT
53 SAINT MARY STREET**

**NON-PUBLIC PROPERTIES
NEWHALL STREET NEIGHBORHOOD
HAMDEN, CONNECTICUT**

Prepared For:



**Olin Corporation
3855 North Ocoee Street, Suite 200
Cleveland, TN 37312**

Prepared By:



**AMEC Environment & Infrastructure, Inc.
511 Congress Street, Suite 200
Portland, Maine 04101**

October 7, 2011

AMEC Project Number: 6107110004/75

A handwritten signature in black ink, appearing to read "Nelson Walter".

Nelson Walter, P.E.
Project Manager


A handwritten signature in black ink, appearing to read "J. Rod Pendleton".

Rod Pendleton, P.G
Principal Scientist

DOCUMENT CERTIFICATION

I have personally examined and am familiar with the information submitted in this document and all attachments thereto, and I certify, based on reasonable investigation, including my inquiry of those individuals responsible for obtaining the information, that the submitted information is true, accurate and complete to the best of my knowledge and belief. I understand that any false statement made in the submitted information is punishable as a criminal offense under §53a-157b of the Connecticut General Statutes and any other applicable law.

David M. Share, Director, Environmental Remediation



Chief Executive Officer (or duly authorized representative)
Olin Corporation

DOCUMENT CERTIFICATION

I have personally examined and am familiar with the information submitted in this document and all attachments thereto, and I certify, based on reasonable investigation, including my inquiry of those individuals responsible for obtaining the information, that the submitted information is true, accurate and complete to the best of my knowledge and belief. I understand that any false statement made in the submitted information is punishable as a criminal offense under §53a-157b of the Connecticut General Statutes and any other applicable law.

Nelson Walter, Project Manager



MACTEC Engineering and Consulting, Inc.

TABLE OF CONTENTS

1.0	INTRODUCTION	1-1
1.1	Regulatory Status	1-1
1.2	Description of Remedy Process	1-1
2.0	PROPERTY-SPECIFIC CONSTRUCTION ACTIVITIES	2-1
3.0	REFERENCES	3-1

FIGURES

Figure 2-1 Post-Construction Conditions

TABLES

Table 2-1 Excavation Confirmation XRF Sampling Results

ATTACHMENTS

1 Photographs

ACRONYMS AND ABBREVIATION

AMEC	AMEC Environment & Infrastructure, Inc.
bgs	below ground surface
DEEP	Connecticut Department of Energy and Environmental Protection
MACTEC	MACTEC Engineering and Consulting, Inc.
NPP	Non-Public Properties
Olin	Olin Corporation
RAP	Remedial Action Plan
RAR	Remedial Action Report
RSP	Remedy Selection Plan
XRF	X-ray fluorescence

1.0 INTRODUCTION

This Property-Specific Remedial Action Report (RAR) was prepared by AMEC Environment & Infrastructure, Inc. (AMEC) on behalf of Olin Corporation (Olin) for the property located at 53 Saint Mary Street in Hamden, Connecticut. This Property-Specific RAR was prepared based on information obtained during remediation activities conducted at the property during the 2011 construction season. This document provides information about the remediation activities completed for the property, which are required by Consent Order SRD-128 entered into by Olin, the Town of Hamden, the Regional Water Authority, the State Board of Education, and the State of Connecticut Department of Energy and Environmental Protection (DEEP). The Consent Order requires Olin to excavate and remove fill material up to 4 feet below ground surface (bgs) from approximately 230 residential properties within the Consent Order boundary.

Section 1 of this report provides a summary of site history and a general description of the remedy process for the Newhall Street Neighborhood. Section 2 of this report describes the construction activities conducted at 53 Saint Mary Street.

1.1 Regulatory Status

In April 2003, the DEEP issued a Consent Order to Olin, the Town of Hamden, South Central Connecticut Regional Water Authority, and the State Board of Education (CTDEP, 2003). The Consent Order requires Olin to investigate and remediate the Non-Public Properties (NPP) within the Consent Order boundary of the Newhall Street Neighborhood.

1.2 Description of Remedy Process

In October 2007, a Final Remedy Selection Plan (RSP) was approved and issued by the Commissioner of the DEEP (CTDEP, 2007). The remedy for the NPP within the Consent Order boundary is summarized below:

- Excavation of fill within the top 4 feet;
- Disposition of excavated material at authorized off-site facilities;
- Backfilling of excavated areas with clean soil; and
- Restoration of existing features including landscaping, patios, fencing, driveways, etc. that are disturbed during construction activities.

The Final Design - Generic Remedial Action Plan (RAP) (MACTEC, 2008), was approved by the DEEP and serves as the basis for remedial action activities within the NPP. The Final Design - Generic RAP details remedial construction activities including excavation of fill to a depth of up to four feet, backfilling excavations, disposition of fill and debris, and restoration of disturbed areas. Detailed plans and specifications regarding the remediation are contained in the Generic RAP and other project plans which have been approved by the DEEP. The Final Design - Generic

RAP and other plans are available at the Town of Hamden Miller Public Library located at 290 Dixwell Avenue, and on the DEEP website at: <http://www.newhallinfo.org>.

Prior to implementing the approved remedial solution, a Property-Specific RAP was prepared for each property owner and submitted to the DEEP for approval. The purpose of the Property-Specific RAP was to provide the homeowner with information regarding the planned construction activities, temporary relocation requirements (if necessary), access provisions, an estimated time table to complete the planned work, and a description of plans to restore the property to existing conditions.

2.0 PROPERTY-SPECIFIC CONSTRUCTION ACTIVITIES

During the 2011 construction season, Olin completed the excavation of fill material to a depth of 4 feet bgs, backfill, and restoration of the property in accordance with the Final Design - Generic RAP and the Property-Specific RAP. Figure 2-1 shows the areas where excavation occurred on the property and the locations of excavation confirmation samples. Excavation confirmation samples were collected in accordance with Section 3.2.3 - Confirmatory Sampling of the Final Design - Generic RAP, including adherence to the sampling frequency requirements. X-ray fluorescence (XRF) excavation confirmation sampling results are presented in Table 2-1. As indicated in Table 2-1, confirmation sampling results for all samples indicate total lead concentrations less than the criteria of 400 mg/kg approved by DEEP in the Final Design - Generic RAP.

The following is a description of changes from the Property-Specific RAP that were necessitated because of field conditions and/or details regarding the marker barrier installed following excavation activities:

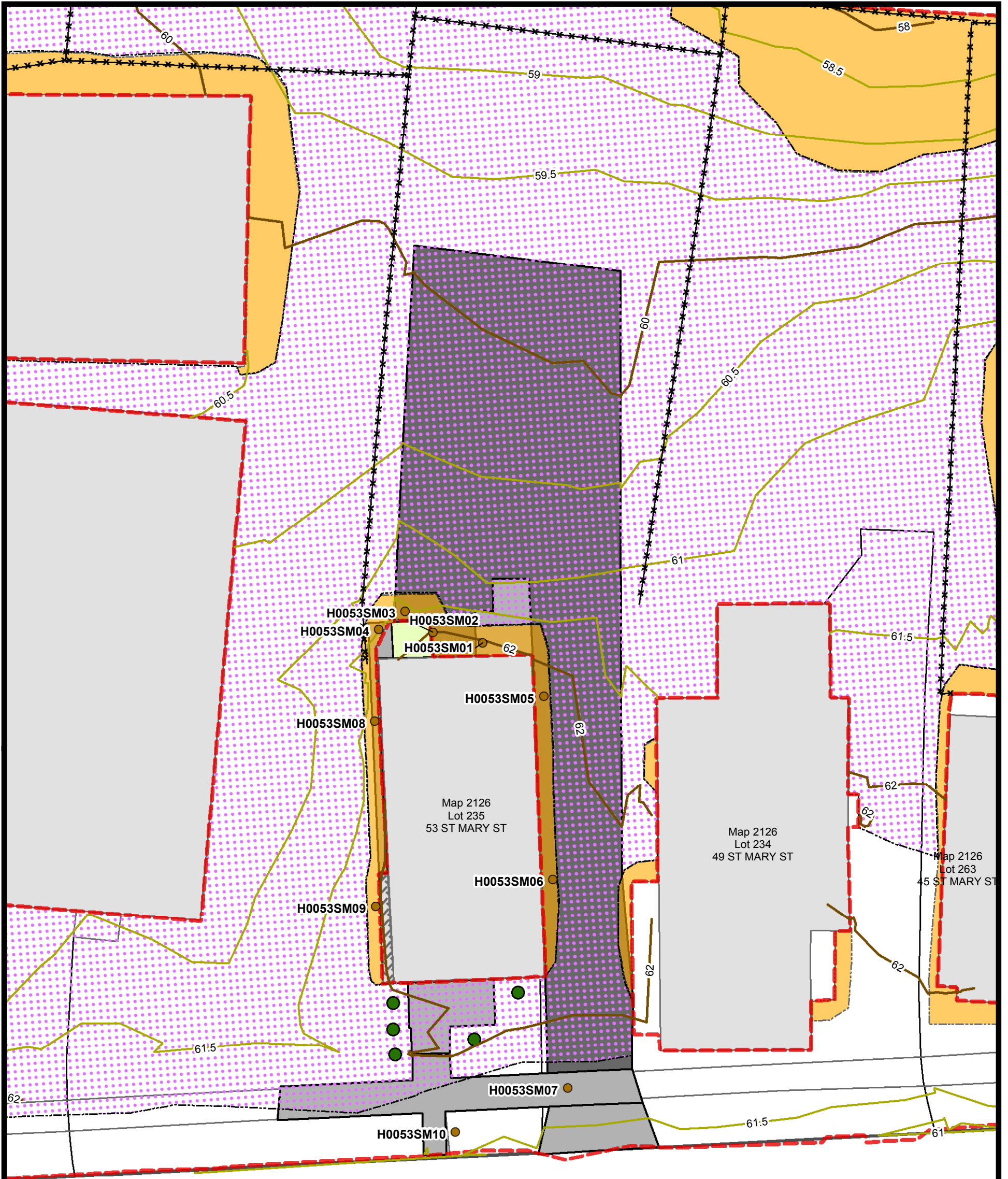
- In some locations, fill material was encountered at greater than 4 feet in depth below ground surface (bgs). This fill material was left in place, covered by an orange geotextile fabric, and backfilled with clean soil in accordance with the Final Design - Generic RAP. Figure 2-1 shows the approximate area of geotextile fabric identifying the presence of fill at a depth greater than 4 feet bgs.
- In some locations, it was necessary to leave fill material in place at depths less than 4 feet bgs in order to avoid jeopardizing the integrity of a structure. This fill material was left in place, covered by an orange geotextile fabric and/or shotcrete, and backfilled with clean soil in accordance with the Final Design - Generic RAP. Figure 2-1 shows the approximate area of geotextile fabric/shotcrete identifying the presence of fill at a depth less than 4 feet bgs.

Photographs of construction activities and the restored property are presented in Attachment 1.

3.0 REFERENCES

- CTDEP, 2003. Order No. SRD-128, State Of Connecticut vs. Town Of Hamden, South Central Connecticut Regional Water Authority, State Board Of Education, and Olin Corporation. State of Connecticut Department of Environmental Protection, April 16, 2003.
- CTDEP, 2007. Remedy Selection Plan, Newhall Street, Neighborhood Remediation Project. State of Connecticut Department of Environmental Protection, October 2007
- MACTEC, 2008. Final Design - Generic Remedial Action Plan, Non-Public Properties, Newhall Street Neighborhood, Hamden, Connecticut. MACTEC Engineering and Consulting, Inc., August 19, 2008.

FIGURES

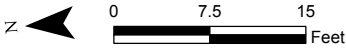


Saint Mary Street

Legend

- Approximate Extent of Orange Marker Barrier
- Limits of Excavation
- Approximate Extent of Orange Marker Barrier
- Final Elevation Contour (2-ft interval)
- Final Elevation Contour (0.5-ft interval)
- Excavation Confirmation Sample
- New Fence
- New Fence Gate
- New Asphalt Driveway/Sidewalk
- New Concrete Driveway/Sidewalk/Stairs
- New Shrub
- Stairs
- Concrete Pad

Note: All grass areas disturbed by excavation were restored with sod and/or seed/mulch.



Prepared/Date: BRP 09/21/11
Checked/Date: DRP 09/21/11



TABLES

**TABLE 2-1
EXCAVATION CONFIRMATION XRF SAMPLING RESULTS**

**53 SAINT MARY STREET
NEWHALL STREET NEIGHBORHOOD
HAMDEN, CONNECTICUT**

Location ID	Location Type	Field Sample ID	Sample Date	Top Depth (ft,bgs)	Bottom Depth (ft,bgs)	Parameter	Result	Final Qualifier	Unit of Measure
H0053SM01EX	PES	H0053SM-SON0103EX	02-May-11	3	3	Lead	167		MG/KG
H0053SM02EX	PES	H0053SM-SON0203EX	02-May-11	3	3	Lead	284		MG/KG
H0053SM03EX	PES	H0053SM-SON0303EX	02-May-11	3	3	Lead	331		MG/KG
H0053SM04EX	PES	H0053SM-SON0403EX	02-May-11	3	3	Lead	195		MG/KG
H0053SM05EX	PES	H0053SM-SON0503EX	03-May-11	3	3	Lead	196		MG/KG
H0053SM06EX	PES	H0053SM-SON0603EX	03-May-11	3	3	Lead	232		MG/KG
H0053SM07EX	PEB	H0053SM-SON0702EX	03-May-11	2	2	Lead	50	U	MG/KG
H0053SM08EX	PES	H0053SM-SON0802EX	04-May-11	2	2	Lead	382		MG/KG
H0053SM09EX	PES	H0053SM-SON0902EX	04-May-11	2	2	Lead	384		MG/KG
H0053SM10EX	PEB	H0053SM-SON1003EX	04-May-11	3	3	Lead	50	U	MG/KG

Notes: bgs - below ground surface

ft - feet

KG - kilograms

MG - milligrams

PEB - sample from bottom of excavation

PES - sample from perimeter of excavation

U - not detected at a concentration above the reporting limit

XRF - x-ray fluorescence

**ATTACHMENT 1
PHOTOGRAPHS**



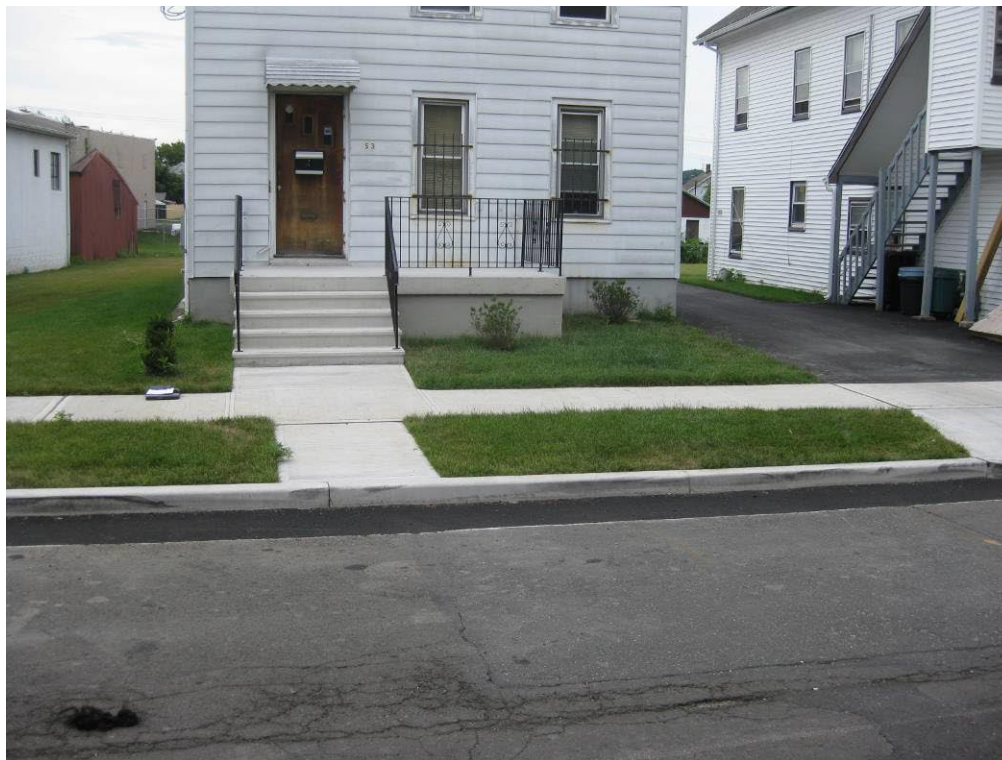
View looking South at excavation of front yard



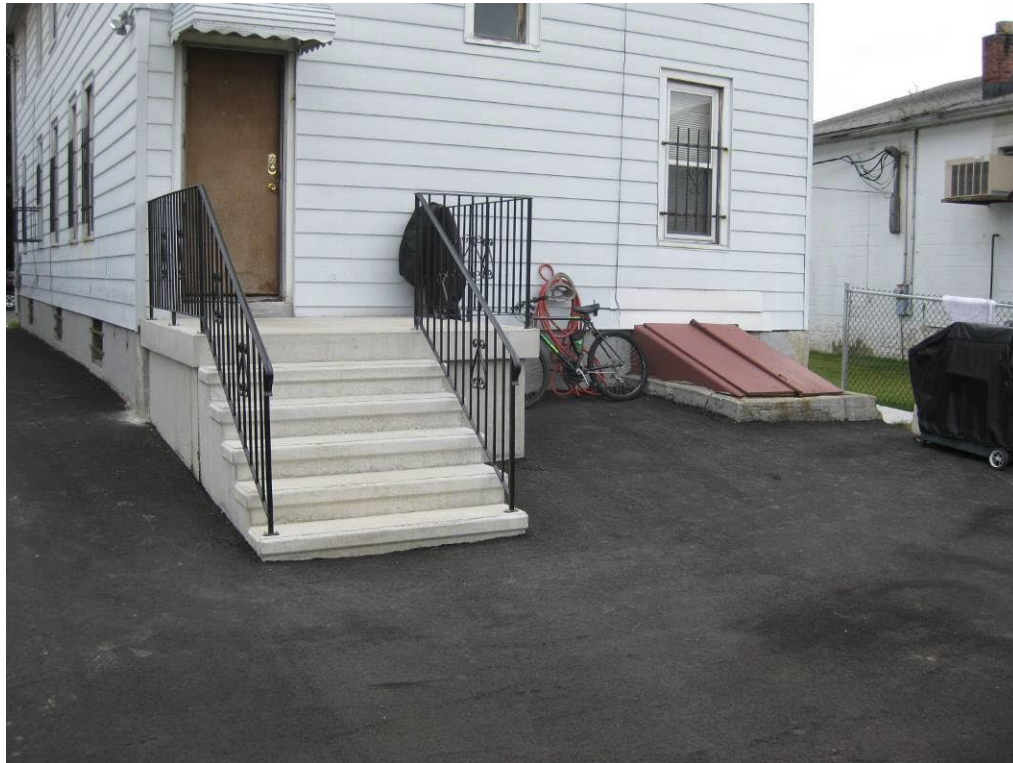
View looking Northwest at excavation area in backyard



View looking East at excavation area following placement of marker barrier



View looking East at restored front yard



View looking West at rear of restored property